



**AXISM**  
LOS ANGELES  
2024



scan to order a  
sample pack



  [axism.la](https://www.axism.la)  
Phone 1-844-223-3444  
Email [sales@axism.com](mailto:sales@axism.com)  
Website [www.axism.com](http://www.axism.com)

5790 Katella Ave Cypress CA 90630



Where innovation meets style. Our brand is more than just clothing; it's a canvas for self-expression and individuality. With a commitment to quality, we provide blank garments that are the perfect foundation for your creative journey. Whether you're printing, embroidering, or designing, our premium apparel sets the stage for your unique brand story. Explore the possibilities and make your mark with

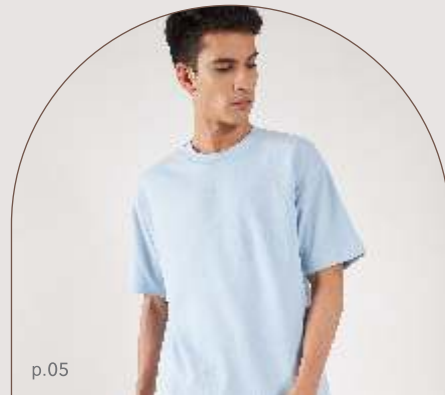


## What's New?

New Mid Weight Fabric **FOMA**



p.12



p.05

New DRI-EASE® colors



p.16

New Flare Pant



p.07

New DRI-EASE® crop top





All products  
have

tear  
away  
label



# EXCITING NEW COLORS

Dri-Ease fabric standout feature is its rapid moisture-wicking. Stay dry and fresh in any situation - strenuous workouts, humid days, or daily routines. No more discomfort or odors.

Feel confident all day!



# DRI-EASE®







# DRI-EASE®

The T-Shirt's front side is 100% Cotton perfect for decoration and backside is knitted with special yarn that helps absorb moisture from the body making it moisture-wicking.



SUSTAINABLE  
BCI COTTON



STRETCH  
COMFORT



ANTI-ODOR



SOFT HAND FEEL



QUICK DRY



BREATHABLE  
MESH



## 7010 oversized tee unisex

100% Cotton face, 55% Ring Spun Cotton 45% Polyester | 6 Oz

All Colors: Small - 2XL, Black: Small - 3XL





# DRI-EASE® 7013 women crop top

100% Cotton face, 55% Ring Spun Cotton 45% Polyester | 6 Oz

All Colors: Small -XL



ALMOND



WHITE



BLACK





# DRI-EASE® 7018 polo shirt

100% Cotton face, 55% Cotton 45% Polyester | 6 Oz  
All Colors: Small - 2XL, Black: Small - 3XL

The Polo Shirt is perfect for work  
as it helps absorb moisture from the  
body keeping you fresh all day.



SUSTAINABLE  
BCI COTTON



STRETCH  
COMFORT



ANTI-ODOR



SOFT HAND FEEL



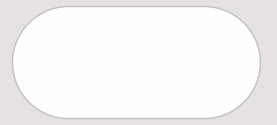
QUICK DRY



BREATHABLE  
MESH



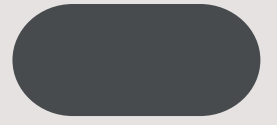
# workwear



WHITE



VULCAN (NAVY)



GRAPHITE



BLACK

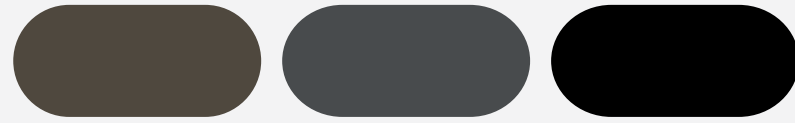


DRI-EASE®

## 7030 mockneck

100% Cotton face, 55% Ring Spun Cotton 45% Polyester | 7 Oz

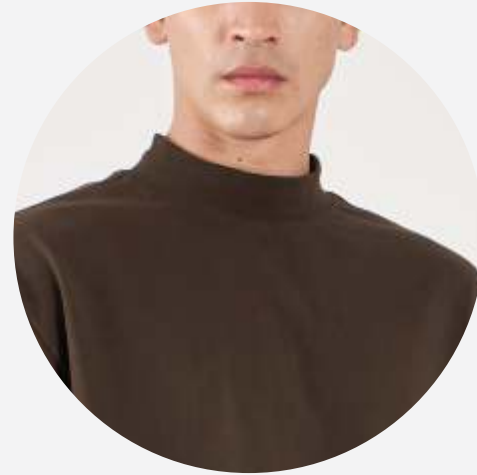
All Colors: Small - 2XL, Black: Small - 3XL



TOBACCO

GRAPHITE

BLACK

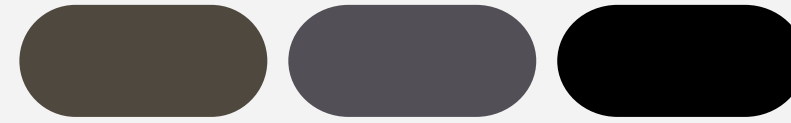


DRI-EASE®

## 7807 jogger with rib

100% Cotton face, 55% Ring Spun Cotton 45% Polyester | 7 Oz

All Colors: Small - 2XL, Black: Small - 3XL



TOBACCO

GRAPHITE

BLACK





# FOMA

## What is FOMA fabric?

A light weight cotton rich fabric made of high quality ring spun cotton which is great for summers. The fabric has a stretch making it comfortable. It's a 100% cotton surface, great for printing, DTG, DTF, Embroidery.



soft & compact cotton  
smooth surface for printing

# FOMA

## 718 crewneck unisex

100% Cotton face, 70% Cotton 30% Polyester | 8 oz

All Colors: Small - 2XL, Black: Small - 3XL



ECRU



ROCK



COCOA



COAL



BLACK





# FOMA

## 7014 hoodie with strings unisex

100% Cotton face, 70% Cotton 30% Polyester | 8 oz

All Colors: Small - 2XL, Black: Small - 3XL

metal rivets and  
cord ends

raglan

full space for printing

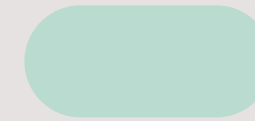
side pockets



WHITE



PEACH



SURF



ARMY



ROCK



COCOA



COAL



BLACK



ultimate summer hoodie



# FOMA

## 7808 flare pant

100% Cotton face, 70% Cotton 30% Polyester | 8 oz

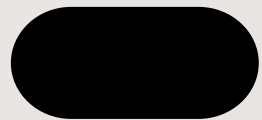
All Colors: Small - 2XL, Black: Small - 3XL



COCOA



COAL



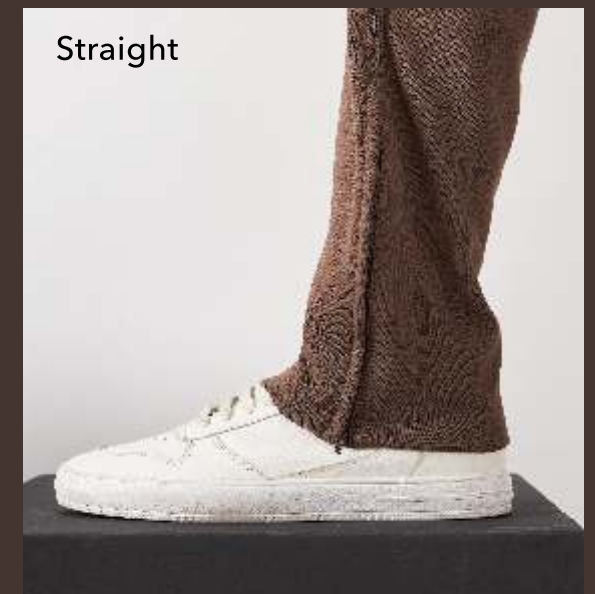
BLACK



Flare



Straight







soft & compact cotton · smooth surface for printing

BRUSHED  
FLEECE



## 7102 pullover hoodie unisex

100% Cotton face, 60% Cotton 40% Polyester | 10 Oz

All Colors: Small - 2XL, Black: Small - 3XL





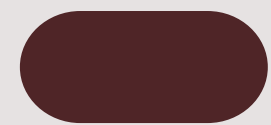


# 7115 crewneck unisex

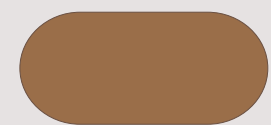
100% Cotton face, 60% Cotton 40% Polyester | 10 Oz

All Colors: Small - 2XL, Black: Small - 3XL

## BRUSHED FLEECE



BEETROOT



BAMBOO



GRAPHITE



BLACK



SAND





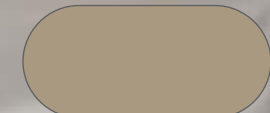


# 7601 zipper

100% Cotton face, 60% Cotton 40% Polyester | 10 Oz  
All Colors: Small - 2XL, Black: Small - 3XL



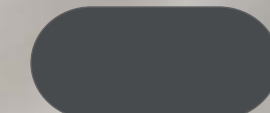
# BRUSHED FLEECE



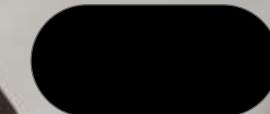
SAND



TOBACCO



GREY HEATHER



BLACK





# 7801 sweatpant

100% Cotton face, 60% Cotton 40% Polyester | 10 Oz  
All Colors: Small - 2XL, Black: Small - 3XL

## BRUSHED FLEECE



SAND



GREY HEATHER



SULPHUR



TOBACCO



VULCAN (NAVY)



BLACK







## 1301 heavy weight cotton tee

100 % Cotton | 7 Oz

All Colors: Small - 2XL, Black: Small - 3XL



## 7007 mid weight tee

60% Ring Spun Cotton 40% Polyester | 5.3 Oz

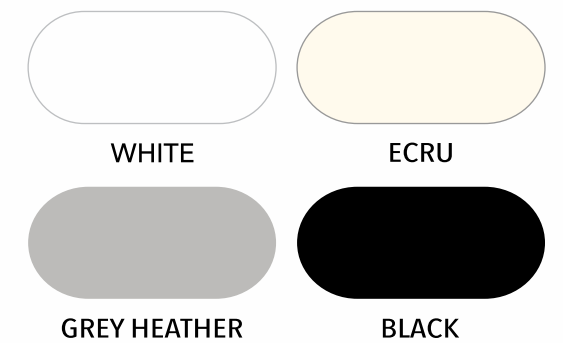
All colors: Small - 2XL, Black: Small - 3XL



## 5007 mid weight womens tee

60% Ring Spun Cotton 40% Polyester | 5.3 Oz

All colors: Small - 2XL, Black: Small - 3XL





“Unleash your imagination on our high quality blanks”

BUY A SAMPLE BUNDLE PACK TO TEST AND TRY

We have pre - packed sample bundle packs which you can purchase through our website to test and try our products before you place a bulk order.

WE HAVE NO MINIMUMS  
ALL PRODUCTS HAVE TEAR AWAY LABELS  
DEEP INVENTORY, SAME DAY SHIPPING

WAREHOUSE AT: 5790 KATELLA AVE, CYPRESS CA 90630

WILL PICKUP AVAILABLE



All our products are made in our own factories in India right from sourcing our own cotton, spinning yarn, knitting fabric, dyeing, stitching, print and embroidery. We have control over quality of fabric and consistency in size and color due to 25 check points throughout our production line.

We take pride in our commitment to ethical and sustainable practices. Our manufacturing process follows strict guidelines to ensure fair labour practices and safe working conditions for everyone. We promote women labour by training them in our own centres and ensuring equal pay.

We proudly use BCI Better Cotton Initiative sustainable cotton in all our products. BCI focuses on environmentally friendly practices, promoting water efficiency, reduced pesticide use, and fair labour conditions. We are making a positive impact on the planet and supporting the livelihoods of cotton farmers and communities.

[www.axism.com](http://www.axism.com)

For any queries please email us at [sales@axism.com](mailto:sales@axism.com)

